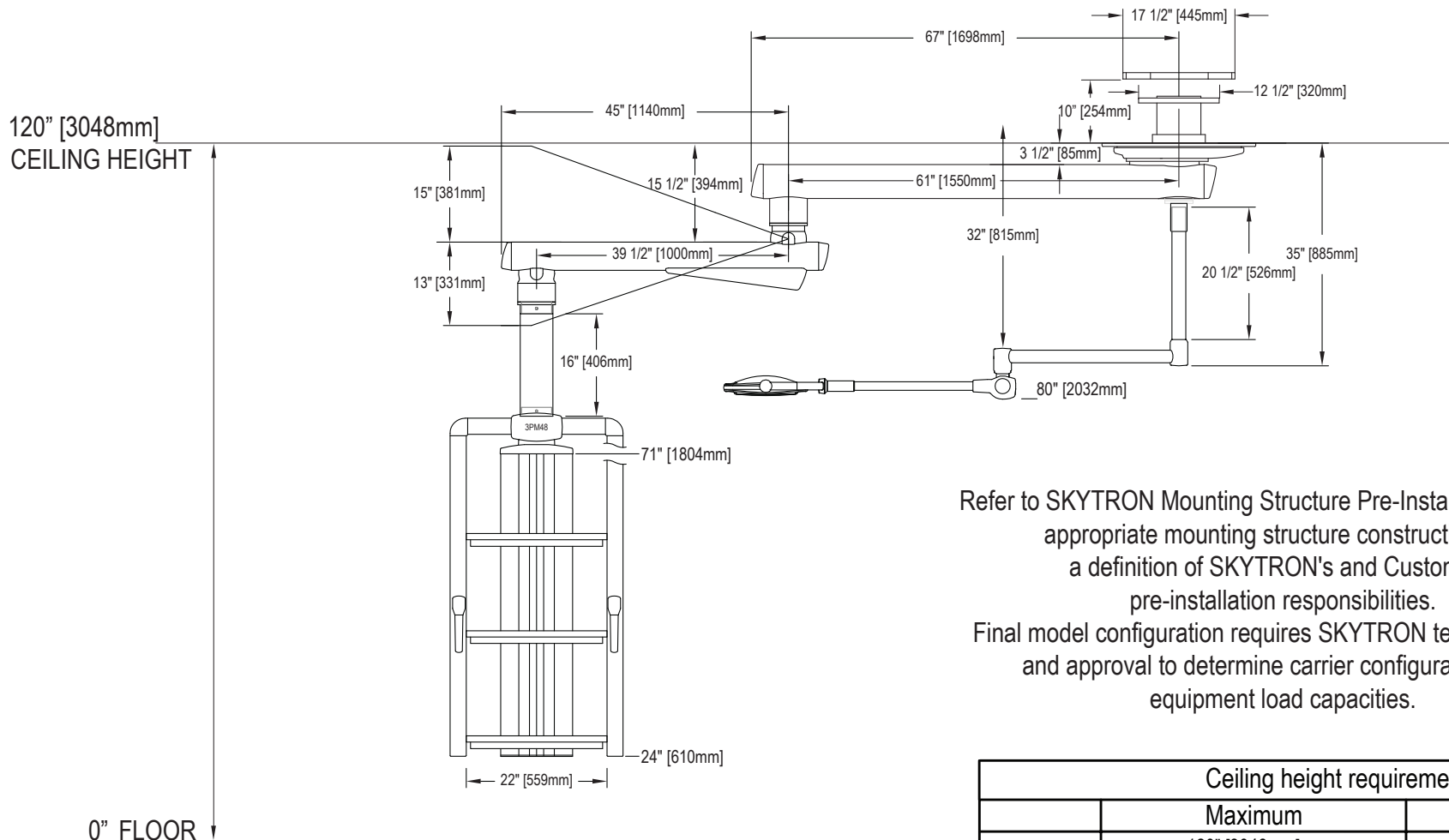


FIXTURE WEIGHT: 677 LBS. MOMENT LOAD: 3651 FT. LBS.

Refer to SKYTRON Mounting Structure Pre-Installation Guide for appropriate mounting structure construction and a definition of SKYTRON's and Customer's pre-installation responsibilities. Final model configuration requires SKYTRON technical review and approval to determine carrier configurations and equipment load capacities.

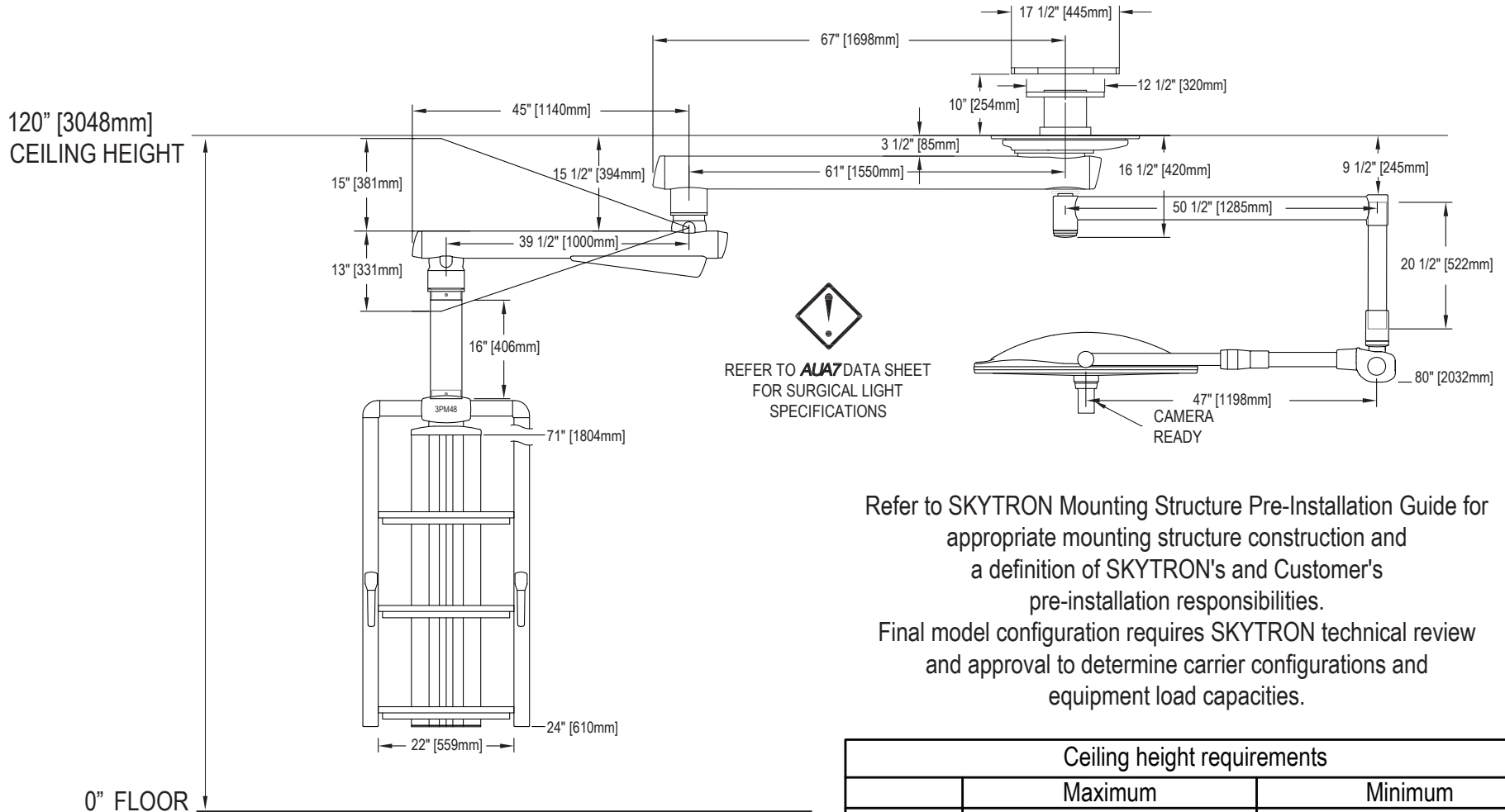
Ceiling height requirements		
	Maximum	Minimum
Carrier Fixed arm	120" [3048mm] = 71" [1804mm] top of carrier	100" [2540mm] = 73" [1854mm] top of carrier
UB Spring and elevato arm	120" [3048mm] = 80" [2032mm] bottom of UB	113" [2870mm] = 77" [1956mm] bottom of UB
Carrier Spring and elevato arm	120" [3048mm] = 71" [1804mm] top of carrier	102" [2591mm] = 70" [1778mm] top of carrier



FIXTURE WEIGHT: 620 LBS. MOMENT LOAD: 3739 FT. LBS.

Refer to SKYTRON Mounting Structure Pre-Installation Guide for appropriate mounting structure construction and a definition of SKYTRON's and Customer's pre-installation responsibilities. Final model configuration requires SKYTRON technical review and approval to determine carrier configurations and equipment load capacities.

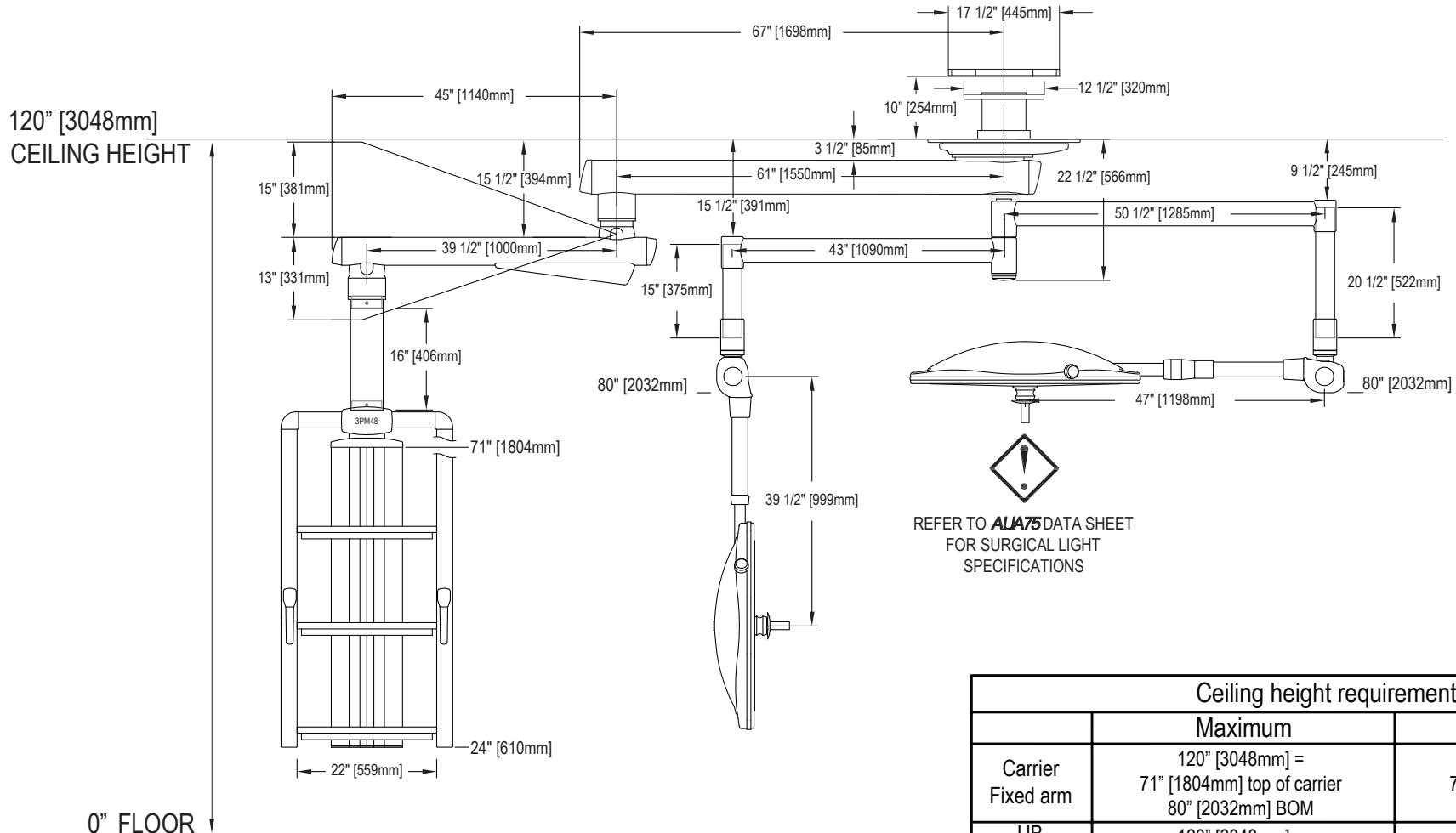
Ceiling height requirements		
	Maximum	Minimum
Carrier Fixed arm	120" [3048mm] = 71" [1804mm] top of carrier 80" [2032mm] BOM	105" [2667mm] = 70" [1778mm] top of carrier 80" [2032mm] BOM
UB Spring and elevato arm	120" [3048mm] = 80" [2032mm] bottom of UB 80" [2032mm] BOM	105" [2667mm] = 70" [1778mm] bottom of UB 80" [2032mm] BOM
Carrier Spring and elevato arm	120" [3048mm] = 71" [1804mm] top of carrier 80" [2032mm] BOM	105" [2667mm] = 72" [1829mm] top of carrier 80" [2032mm] BOM



FIXTURE WEIGHT: 797 LBS. MOMENT LOAD: 4374 FT. LBS.

Refer to SKYTRON Mounting Structure Pre-Installation Guide for appropriate mounting structure construction and a definition of SKYTRON's and Customer's pre-installation responsibilities. Final model configuration requires SKYTRON technical review and approval to determine carrier configurations and equipment load capacities.

Ceiling height requirements		
	Maximum	Minimum
Carrier Fixed arm	120" [3048mm] = 71" [1804mm] top of carrier 80" [2032mm] BOM	106" [2692mm] = 71" [1803mm] top of carrier 80" [2032mm] BOM
UB Spring and elevato arm	120" [3048mm] = 80" [2032mm] bottom of UB 80" [2032mm] BOM	106" [2692mm] = 71" [1803mm] bottom of UB 80" [2032mm] BOM
Carrier Spring and elevato arm	120" [3048mm] = 71" [1804mm] top of carrier 80" [2032mm] BOM	106" [2692mm] = 74" [1880mm] top of carrier 80" [2032mm] BOM




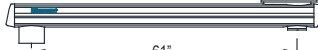
REFER TO **AUA75** DATA SHEET FOR SURGICAL LIGHT SPECIFICATIONS


Ceiling height requirements		
	Maximum	Minimum
Carrier Fixed arm	120" [3048mm] = 71" [1804mm] top of carrier 80" [2032mm] BOM	112" [2845mm] = 73" [1854mm] top of carrier 80" [2032mm] BOM
UB Spring and elevato arm	120" [3048mm] = 80" [2032mm] bottom of UB 80" [2032mm] BOM	112" [2845mm] = 77" [1956mm] bottom of UB 80" [2032mm] BOM
Carrier Spring and elevato arm	120" [3048mm] = 71" [1804mm] top of carrier 80" [2032mm] BOM	112" [2845mm] = 70" [1778mm] top of carrier 80" [2032mm] BOM


Refer to SKYTRON Mounting Structure Pre-Installation Guide for appropriate mounting structure construction and a definition of SKYTRON's and Customer's pre-installation responsibilities.  
Final model configuration requires SKYTRON technical review and approval to determine carrier configurations and equipment load capacities.


FIXTURE WEIGHT: 903 LBS. MOMENT LOAD: 4758 FT. LBS.





**3EC-L**  61" [1550mm]

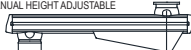
**3EC**  51" [1300mm]


**3EC-C**  44 1/2" [1130mm]


**32F-L**  FIXED HEIGHT 39 1/2" [1000mm]

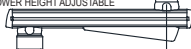
**32F**  FIXED HEIGHT 31 1/2" [800mm]

**32F-C**  FIXED HEIGHT 23 1/2" [600mm]

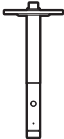
**32S-H**  MANUAL HEIGHT ADJUSTABLE 31 1/2" [800mm]

**32S**  MANUAL HEIGHT ADJUSTABLE 31 1/2" [800mm]

**32E-XL**  POWER HEIGHT ADJUSTABLE 39 1/2" [1000mm]

**32E**  POWER HEIGHT ADJUSTABLE 31 1/2" [800mm]

NO LIGHT REQUIRES CAP H2-210-58-A



**MUST ADD SPINDLE TO SUPPORT LIGHT**

PART NO.	DESCRIPTION
H2-201-40	Light Spindle, EC, NL25
H2-201-41	Light Spindle, EC, NL2525
H2-201-38	Light Spindle, EC, AUA Single [TV or NON-TV]
H2-201-39	Light Spindle, EC, AUA Dual [TV or NON-TV]
H2-201-55	Adapter for AUT1B light